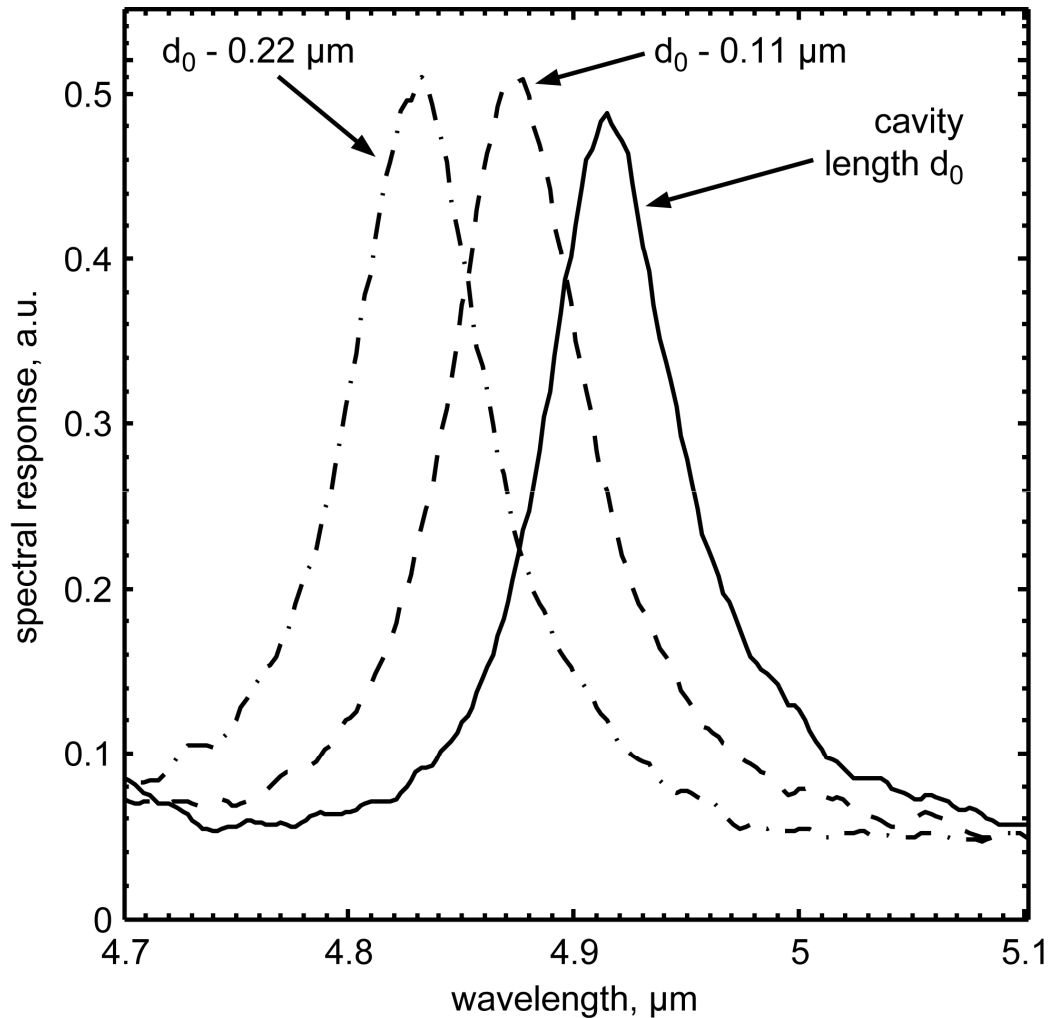
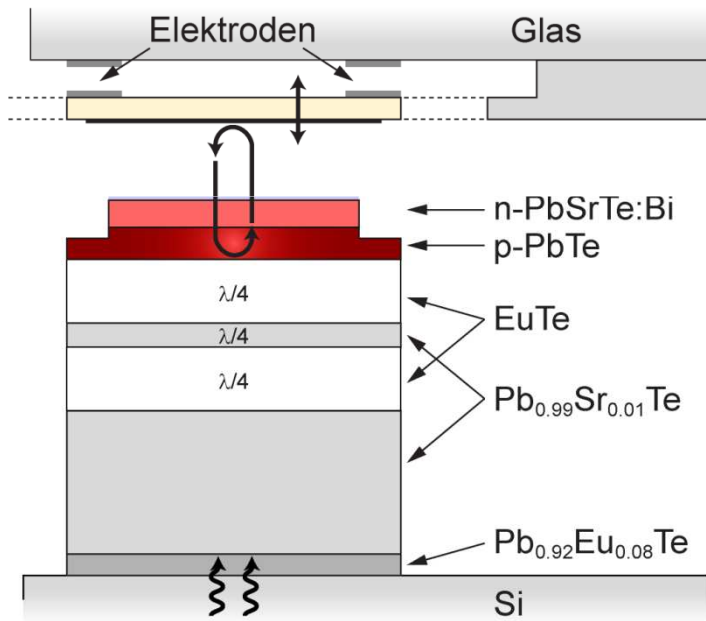


Tunable PbTe RCED with MEMS micromirror

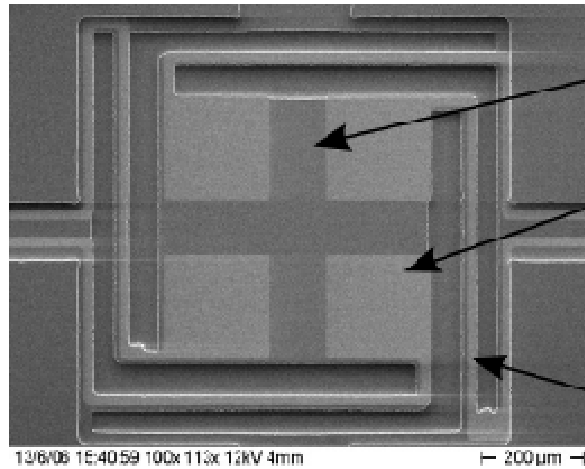


FWHM = 40 nm

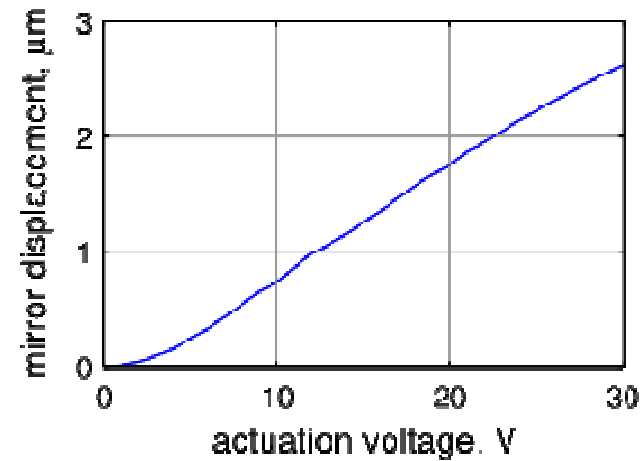
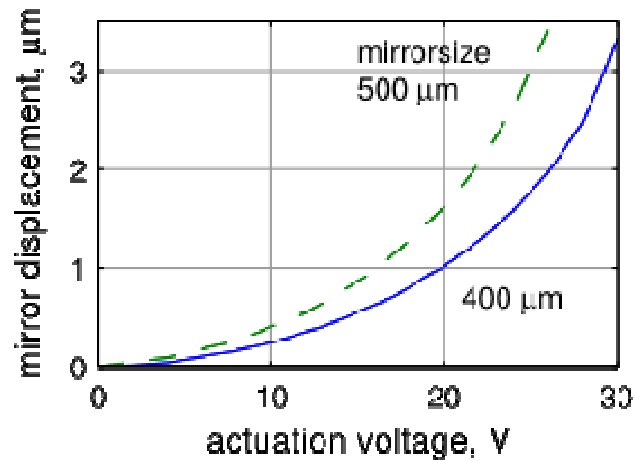
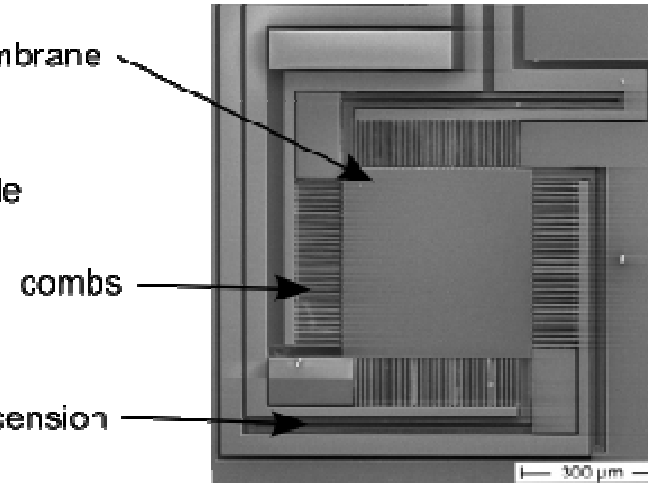


MEMS micromirror

Parallel plate actuation



Comb-drive actuation



N. Quack et al., Sensors 2008, 8 (9)

Gas sensing – CO

- Measurement of air compared to air + 30 ppm CO
- Sensitivity < 1 ppm CO!

